

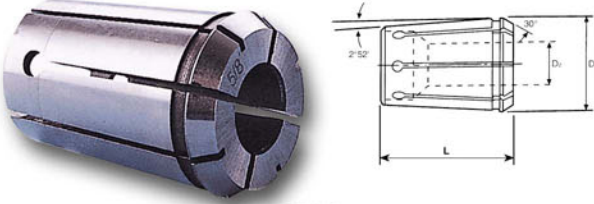


Milling Clamping Nuts & Wrench For OZ

COLLET DIN 6388, TYPE A

DIN 6388 #16,#25,#32 SERIES

COLLET MUST BE ASSEMBLED INTO THE CLAMPING NUT BEFORE INSERTING INTO THE CHUCK

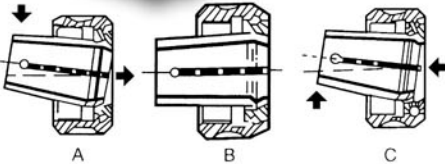


METRIC

ORDER NO.	D1	L	D2(MM)
OZ-16-□	25.5	40	2, 3, 4, 5, 6, 7, 8, 9, 10, 11, 12, 13, 14, 15, 16
OZ-25-□	35.05	52	3, 4, 5, 6, 7, 8, 9, 10, 11, 12, 13, 14, 15, 16, 18, 20, 25
OZ-32-□	44	60	6, 8, 10, 12, 16, 20, 25, 32

INCH

ORDER NO.	D1	L	D2(INCH)
OZ-25-□	35.05	52	1/8", 3/16", 1/4", 5/16", 3/8", 7/16", 1/2", 9/16", 5/8", 11/16", 3/4", 13/16", 7/8", 15/16", 1"
OZ-32-□	43.7	60	1/4", 5/16", 3/8", 7/16", 1/2", 9/16", 5/8", 11/16", 3/4", 13/16", 7/8", 15/16", 1", 1 1/8", 1 1/4"



■ RANGE SIZE:3-25(1/8"-1")

OZ-25 ■ D:35.05 ■ L:52 ■ TAPER:1:10 ■ WEIGHT:0.18KGS

ORDER NO.	CODE NO.	MM SIZE	ORDER NO.	CODE NO.	MM SIZE	ORDER NO.	CODE NO.	INCH	ORDER NO.	CODE NO.	INCH
OZ-2503	3100-101	3.0	OZ-2515	3100-113	15	OZ-2526	3100-124	1/8"	OZ-2538	3100-136	7/8"
OZ-2504	3100-102	4.0	OZ-2516	3100-114	16	OZ-2527	3100-125	3/16"	OZ-2539	3100-137	15/16"
OZ-2505	3100-103	5.0	OZ-2517	3100-115	17	OZ-2528	3100-126	1/4"	OZ-2540	3100-138	1"
OZ-2506	3100-104	6.0	OZ-2518	3100-116	18	OZ-2529	3100-127	5/16"			
OZ-2507	3100-105	7.0	OZ-2519	3100-117	19	OZ-2530	3100-128	3/8"			
OZ-2508	3100-106	8.0	OZ-2520	3100-118	20	OZ-2531	3100-129	7/16"			
OZ-2509	3100-107	9.0	OZ-2521	3100-119	21	OZ-2532	3100-130	1/2"			
OZ-2510	3100-108	10	OZ-2522	3100-120	22	OZ-2533	3100-131	9/16"			
OZ-2511	3100-109	11	OZ-2523	3100-121	23	OZ-2534	3100-132	5/8"			
OZ-2512	3100-110	12	OZ-2524	3100-122	24	OZ-2535	3100-133	11/16"			
OZ-2513	3100-111	13	OZ-2525	3100-123	25	OZ-2536	3100-134	3/4"			
OZ-2514	3100-112	14				OZ-2537	3100-135	13/16"			

DIN6388 32# ■ RANGE SIZE:6-32(1/4"-1 1/4")

OZ-32 ■ D:43.7 ■ L:60 ■ TAPER:1:10 ■ WEIGHT:0.25KGS

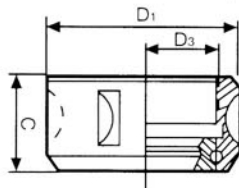


■ DIN 6388 16#

■ O Z-16 COLLET

ORDER NO.	CODE NO.	MM SIZE	ORDER NO.	CODE NO.	MM SIZE	ORDER NO.	CODE NO.	INCH	ORDER NO.	CODE NO.	MM
OZ-3206	3100-201	6.0	OZ-3220	3100-215	20	OZ-3233	3100-228	1/4"	OZ-1602	3100-001	2.0
OZ-3207	3100-202	7.0	OZ-3221	3100-216	21	OZ-3234	3100-229	5/16"	OZ-1603	3100-002	3.0
OZ-3208	3100-203	8.0	OZ-3222	3100-217	22	OZ-3235	3100-230	3/8"	OZ-1604	3100-003	4.0
OZ-3209	3100-204	9.0	OZ-3223	3100-218	23	OZ-3236	3100-231	7/16"	OZ-1605	3100-004	5.0
OZ-3210	3100-205	10	OZ-3224	3100-219	24	OZ-3237	3100-232	1/2"	OZ-1606	3100-005	6.0
OZ-3211	3100-206	11	OZ-3225	3100-220	25	OZ-3238	3100-233	9/16"	OZ-1607	3100-006	7.0
OZ-3212	3100-207	12	OZ-3226	3100-221	26	OZ-3239	3100-234	5/8"	OZ-1608	3100-007	8.0
OZ-3213	3100-208	13	OZ-3227	3100-222	27	OZ-3240	3100-235	11/16"	OZ-1609	3100-008	9.0
OZ-3214	3100-209	14	OZ-3228	3100-223	28	OZ-3241	3100-236	3/4"	OZ-1610	3100-009	10
OZ-3215	3100-210	15	OZ-3229	3100-224	29	OZ-3242	3100-237	13/16"	OZ-1611	3100-010	11
OZ-3216	3100-211	16	OZ-3230	3100-225	30	OZ-3243	3100-238	7/8"	OZ-1612	3100-011	12
OZ-3217	3100-212	17	OZ-3231	3100-226	31	OZ-3244	3100-239	15/16"	OZ-1613	3100-012	13
OZ-3218	3100-213	18	OZ-3232	3100-227	32	OZ-3245	3100-240	1"	OZ-1614	3100-013	14
OZ-3219	3100-214	19				OZ-3246	3100-241	1-1/8"	OZ-1615	3100-014	15
						OZ-3247	3100-242	1-1/4"	OZ-1616	3100-015	16

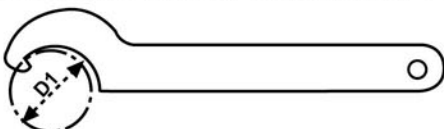
BALL BEARING, NUTS FOR COLLETS DIN6388, TYPE A



Unit:mm

ORDER NO.	C	D1	D3	COLLETS	CODE NO.
OZ-25N	30	60	M48X2	OZ-25	3100-301
OZ-32N	33	72	M60X2.5	OZ-32	3100-302

WRENCH FOR COLLETS DIN6388 TYPE A



Unit:mm

ORDER NO.	D1	COLLETS	CODE NO.
OZ-25W	60	OZ-25	3100-310
OZ-32W	72	OZ-32	3100-311